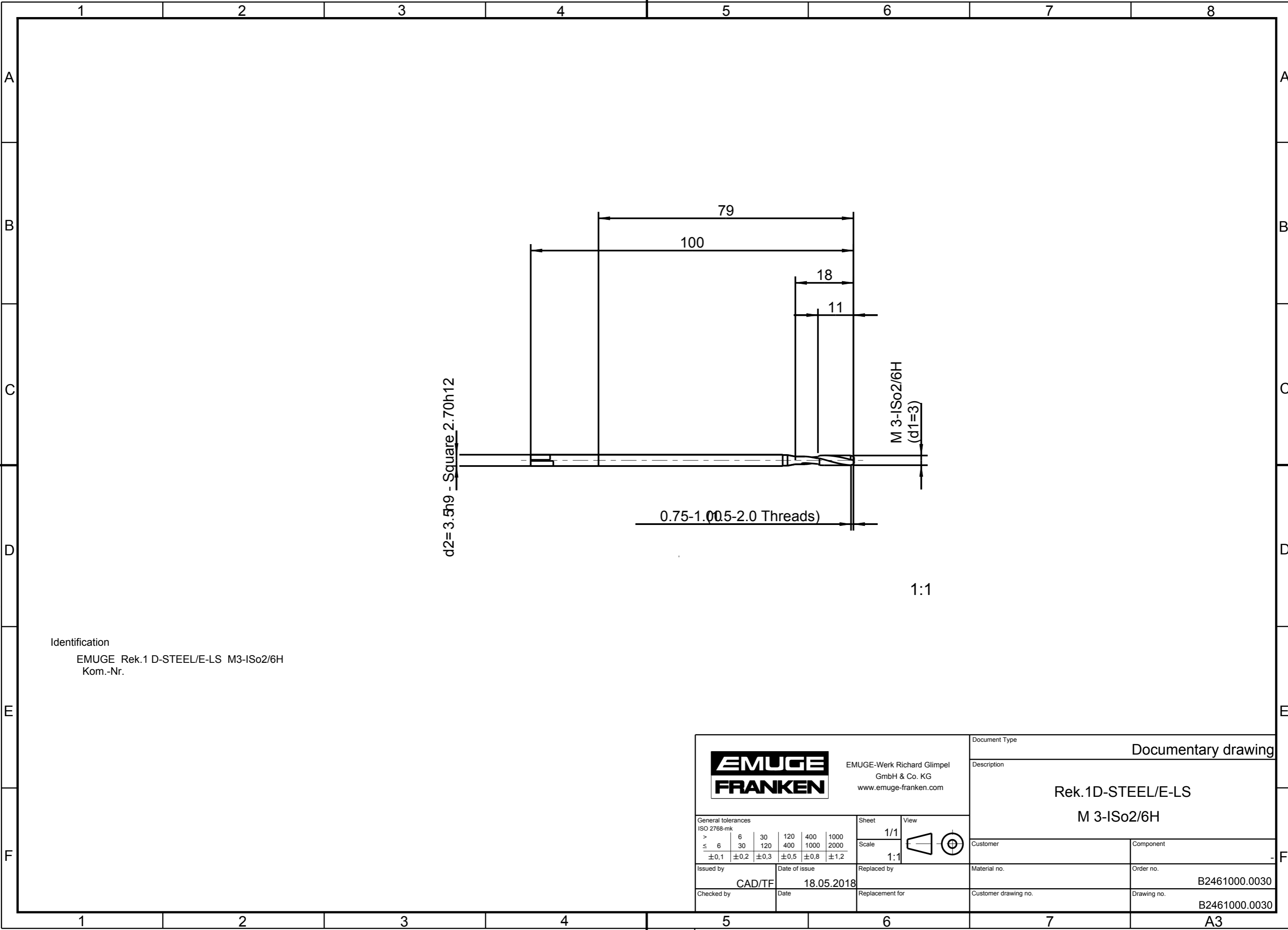


Weder die noch Herstellung dieses Dokuments, Vervielfältigung und Mitteilung seines Inhalts, sind
 verboten, soweit nicht ausdrücklich gestattet. Zuwiderhandlungen verpflichten zu Schadenersatz. Alle
 Rechte für den Fall der Patent-, Gebrauchsmuster- oder Geschmacksunterzeichnung vorbehalten.
 "Schutzvermerk nach DIN ISO 16016 beachten" Technische Änderungen vorbehalten!


Issued with CAD! Changes to be made only on the CAD/CAM modell

The reproduction, distribution and utilization of this document as well as the
 communication of its contents to others without explicit authorization is
 prohibited. All rights reserved in the event of the grant of a patent, utility model or design.
 "Observe protective mark according to DIN ISO 16016" Technical data is subject to change without notice!



Identification

EMUGE Rek.1 D-STEEL/E-LS M3-ISO2/6H
 Kom.-Nr.

 EMUGE-Werk Richard Glimpel GmbH & Co. KG www.emuge-franken.com		Document Type		Documentary drawing	
		Description		Rek.1D-STEEL/E-LS M 3-ISO2/6H	
General tolerances ISO 2768-mk > 6 30 120 400 1000 2000 ≤ 6 30 120 400 1000 2000 ±0,1 ±0,2 ±0,3 ±0,5 ±0,8 ±1,2		Sheet	1/1	View	
Issued by CAD/TF		Date of issue	18.05.2018	Replaced by Material no. Order no. B2461000.0030	
Checked by		Date	Replacement for	Customer drawing no. Drawing no. B2461000.0030	

A3